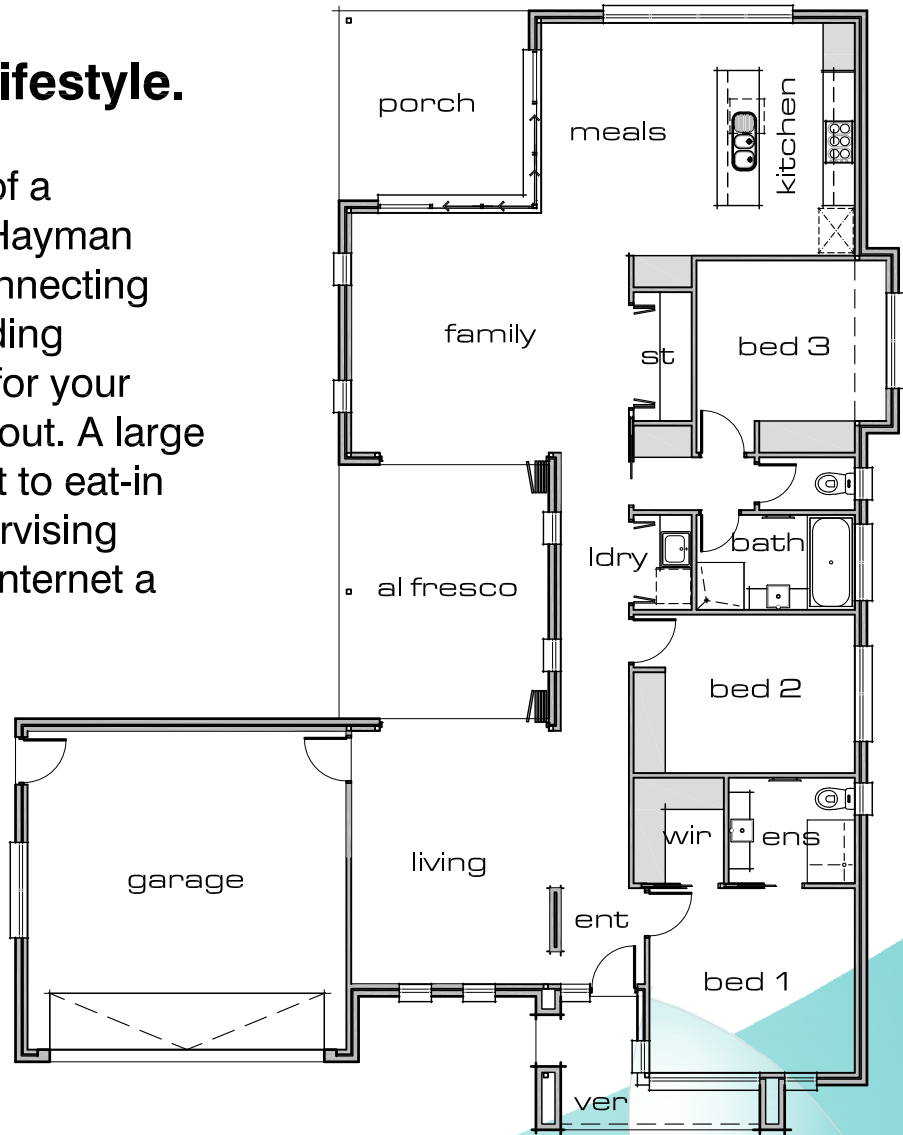


## Your Flexible Lifestyle.

Meeting the needs of a growing family the Hayman features five interconnecting living spaces, providing maximum flexibility for your family, indoors and out. A large study nook adjacent to eat-in kitchen makes supervising homework and the internet a breeze!

- 3 bedrooms
- study
- garage
- al fresco dining
- formal lounge
- meals/living



# the Hayman

26.05sq

**CONTACT:- LUKE TIERNEY**

Lifestyle Developments

P.O. Box 971 CP

Mildura Victoria 3501

Email:- [luke@lifestyledevelopments.com.au](mailto:luke@lifestyledevelopments.com.au)

**PHONE:- 0408 057 059**

dwelling - 162.45m<sup>2</sup>

garage - 41.53m<sup>2</sup>

externals - 38.03m<sup>2</sup>

total:- 242.01m<sup>2</sup>

© COPYRIGHT - 2009

*Lifestyle*  
developments

*Building a Better Life!*