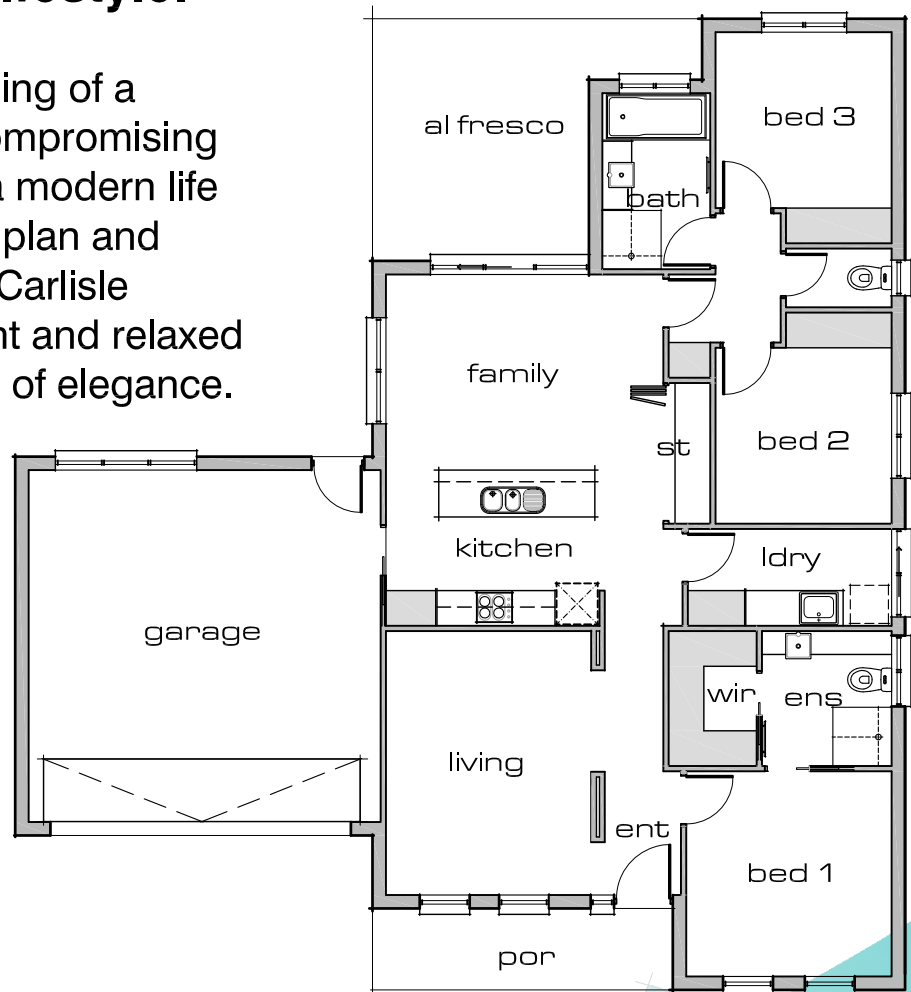


Your federation lifestyle.

Enjoy the stylish detailing of a bygone era without compromising on the necessities of a modern life or your budget. Open plan and technology ready the Carlisle provides for an efficient and relaxed family life with a touch of elegance.



- 3 bedrooms
- study nook
- garage
- formal lounge
- al fresco / living

the Carlisle

20.42sq

CONTACT:- LUKE TIERNEY

Lifestyle Developments
 P.O. Box 971 CP
 Mildura Victoria 3501

Email:- luke@lifestyledevelopments.com.au

PHONE:- 0408 057 059

dwelling - 125.09m²
 garage - 40.36m²
 externals - 24.31m²
 total: - 189.76m²

© COPYRIGHT - 2009